



NELSON FAMILY
MORTUARY

TRADITIONAL FUNERAL PACKAGES

These packages are offered at a discounted price when the casket and vault are purchased through Nelson Family Mortuary. All package pricing reflects services held at Nelson Family Mortuary.



GOLD

The gold package includes services for those wanting more time to greet friends and family. It provides the opportunity to attend an evening visitation for those who cannot attend funeral services the next day. **5260**

Includes: Basic charges for professional services of funeral director and staff/overhead; additional services of funeral director and staff for funeral planning and coordination/ administrative; transfer of remains to the funeral home(within a 40 mile radius); embalming and all other necessary preparations of the remains; use of facilities, staff and equipment for evening visitation, funeral ceremony and same day visitation (2 hours) at Nelson Family Mortuary; graveside, committal or other disposition service; use of funeral coach; use of other automobiles necessary to the funeral (excluding use of limousine); transport flowers at family's request and delivery of family's flowers and belongings following the funeral to their residence or elsewhere; Signature book and acknowledgment cards; 200 Custom designed and printed programs; funeral video recording and live webcasting of services; Custom temporary grave plaque; Memorial DVD slideshow; Online obituary

SILVER

The silver package includes services for those not wanting an evening visitation. **4885**

Includes: Basic charges for professional services of funeral director and staff/overhead; additional services of funeral director and staff for funeral planning and coordination/ administrative; transfer of remains to the funeral home(within a 40 mile radius); embalming and all other necessary preparations of the remains; use of facilities, staff and equipment for funeral ceremony and same day visitation (2 hours) at Nelson Family Mortuary; graveside, committal or other disposition service; use of funeral coach; use of other automobiles necessary to the funeral (excluding use of limousine); transport flowers at family's request and delivery of family's flowers and belongings following the funeral to their residence or elsewhere; Signature book and acknowledgment cards; 200 Custom designed and printed programs; funeral video recording and live webcasting of services; Custom temporary grave plaque; Memorial DVD slideshow; Online obituary

BRONZE

The bronze package is provided for those families who want the minimum services and products and same day visitation and funeral. **4065**

Includes: Basic charges for professional services of funeral director and staff/overhead; additional services of funeral director and staff for funeral planning and coordination/ administrative; transfer of remains to the funeral home(within a 40 mile radius); embalming and all other necessary preparations of the remains; use of facilities, staff and equipment for funeral ceremony and same day visitation (2 hours) at Nelson Family Mortuary; graveside, committal or other disposition service; Use of funeral coach; Use of other automobiles necessary to the funeral (excluding use of limousine); Transport of flowers at family's request and delivery of family's flowers and belongings following the funeral to their residence or elsewhere; Online obituary

CREMATION PACKAGES

These packages are offered at a discounted price when the casket and vault are purchased through Nelson Family Mortuary. All package pricing reflects services held at Nelson Family Mortuary.

If services are held at Nelson Family Mortuary AND no graveside services, apply a credit of \$620



GOLD

The gold package includes services for those wanting more time with their loved one before cremation. It provides the opportunity to attend an evening visitation for those who cannot attend funeral services followed by traditional funeral services the next day. Cremation takes place after all services and viewings. 6410

Includes: Basic charges for professional services of funeral director and staff/overhead; additional services of funeral director and staff for funeral planning and coordination/ administrative; transfer of remains to the funeral home(within a 40 mile radius); embalming and all other necessary preparations of the remains; use of facilities, staff and equipment for evening visitation, funeral ceremony and same day visitation (2 hours) at Nelson Family Mortuary; use of other automobiles necessary to the funeral (excluding use of limousine); transport flowers at family's request and delivery of family's flowers and belongings following the funeral to their residence or elsewhere; Signature book and acknowledgment cards; 200 Custom designed and printed programs; funeral video recording and live webcasting of services; Memorial DVD slideshow; Online obituary

SILVER

The silver package includes services for those not wanting an evening visitation but prefer services and viewing on same day. 6035

Includes: Basic charges for professional services of funeral director and staff/overhead; additional services of funeral director and staff for funeral planning and coordination/ administrative; transfer of remains to the funeral home(within a 40 mile radius); embalming and all other necessary preparations of the remains; use of facilities, staff and equipment for funeral ceremony and same day visitation (2 hours) at Nelson Family Mortuary; use of other automobiles necessary to the funeral (excluding use of limousine); transport flowers at family's request and delivery of family's flowers and belongings following the funeral to their residence or elsewhere; Signature book and acknowledgment cards; 200 Custom designed and printed programs; funeral video recording and live webcasting of services; Memorial DVD slideshow; Online obituary

BRONZE

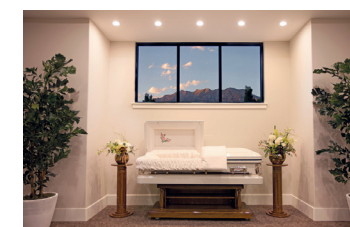
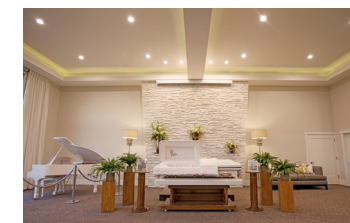
The bronze package is provided for those wanting memorial services with the cremated remains only. This package provides a memorial service with family able to receive friends one hour prior to Memorial. 4795

Includes: Basic charges for professional services of funeral director and staff/overhead; additional services of funeral director and staff for funeral planning and coordination/ administrative; transfer of remains to the funeral home(within a 40 mile radius); use of facilities, staff and equipment for funeral ceremony and same day visitation (2 hours) at Nelson Family Mortuary; use of other automobiles necessary to the funeral (excluding use of limousine); transport flowers at family's request and delivery of family's flowers and belongings following the funeral to their residence or elsewhere; Signature book and acknowledgment cards; 200 Custom designed and printed programs; funeral video recording and live webcasting of services; Memorial DVD slideshow; Online obituary

GENERAL PRICE LIST

Effective February 1, 2017

The goods and services shown below are those we can provide to our customers. You may choose only the items you desire. However, any funeral arrangements you select will include a charge for our basic services and overhead. If legal or other requirements mean you must buy any items you did not specifically ask for, we will explain the reason in writing on the statement we provide describing the funeral goods and services you selected.

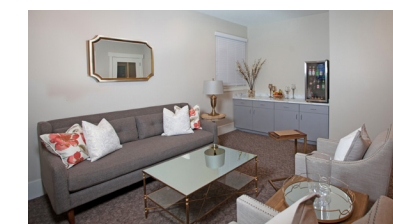


PROFESSIONAL & STAFF SERVICES

This fee for our basic services and overhead will be added to the total cost of the funeral arrangements you select(This fee is already included in our charges for direct cremations, immediate burials, and forwarding or receiving remains.) Also included in this charge is: Shelter of deceased (5 days), Funeral Counseling, Arrangement Conference, Coordination of Service and Burial Plans, Legal Filing of Death Certificate and Obituary placement/editing. 1650

EMBALMING

Except in certain special cases, Embalming is not required by law. Embalming may be necessary, however, if you select certain funeral arrangements, such as a funeral with viewing. If you do not want embalming, you usually have the right to choose an arrangement that does not require you to pay for it, such as direct cremation or immediate burial. 895



ADDITIONAL PRICING

FACILITIES, EQUIPMENT & STAFF

Use of Facilities and Staff for Funeral or Memorial Service at Nelson Family Mortuary 525
 at Church/Other Facility 625

Use of Facilities and Staff for Viewing/Visitation at Nelson Family Mortuary 375
 at Church/Other Facility 75
 Use of Equipment and Staff for Graveside Saturday, Sunday or Holiday Services 295
 200



LUNCHEON (CATERED)

A comfortable atmosphere for family and friends to gather following services. Included in this offer is catered lunch and drinks by one of our select restaurants. We provide the facilities, equipment, accessories and furniture needed for up to 100 people.

*Ask for current food pricing



OTHER PREPARATION OF DECEASED

Direct Cremation 1495
 Bathing, Dressing, Casketing of Embalmed Remains 345
 Bathing, Dressing, Casketing of Un-Embalmed Remains 495
 Special Care of Autopsy/Organ Donor Remains 390
 Additional Care of Oversized Body (above 100lbs) 200
 Women's Hair Dresser 65
 Removal of Pacemaker/Defibrillator for Cremation 75
 Holding/Refrigeration (p/day if no funeral services) 50

Personalized Memorial DVD 75
 Funeral Audio Recording 120
 Professional Pianist 175
 Cremated Remains Packaging and Shipping 100
 Casket Shipping Tray 125
 Combination Shipping Tray 100
 Casket Head Panel (Custom Design) 175
 Temporary Grave Marker 75
 Burial Flag (Without DD-214) 175
 Fingerprint Life Pendant Keepsake Jewelry 95
 Linens/Tables/Chairs/Facilities for Luncheon 395
 Filing of Insurance Claim/Documentation 300
 Foreign Shipping Documentation & Translation 500
 Valet Parking (Viewing at Nelson Family Mortuary) 350
 Use of Facilities for Non-Funeral Meeting (4 hrs) 425
 Horse-Drawn Carriage 595
 Crucifix 45
 Military Flag Display Case 65
 Candle-Light Vigil 495
 Butterfly or Dove Release 395
 Balloon Release 125
 Signature Book Package/Thank You Cards 150

AUTOMOTIVE & TRANSPORTATION

Initial Transfer of Deceased to Mortuary 475
 Transfer of Deceased to SLC International Airport 275
 Funeral Hearse & Driver 325
 Police Escort of Procession 500
 Beyond 40-mile Radius (per mile) 1.00
 Forwarding Deceased TO Another Funeral Home* 1650
 Receiving Deceased FROM Another Funeral Home* 1650
 Flower, Equipment & Funeral Service Vehicle 159
 Private Limousine 150
 Private Chauffeur from/to Airport (up to 6 people) 325

MERCHANDISE & OTHER SERVICES

Register Book 35
 Custom Design Service Programs (per program) 1.25

WEB CASTING OF FUNERAL

As our lives get busier and the distances between loved ones grow, its not always possible to attend funeral services. This option enables family and friends to be part of a memorial service either live while the service happens or later, when time permits. Through a simple email invitation family and friends are able to access the service. You will be able to access the archived service up to 90 days. 425



PHOTO BOOK PACKAGES

PACKAGE A

12x12 Designer LayFlat Photo Album, Digital Images (USB) 575



PACKAGE B

10x10 Designer LayFlat Photo Album, Digital Images (USB) 475

PACKAGE C

8x8 Designer LayFlat Photo Album, Digital Images (USB) 375

ADDITIONS

20X24 Framed Lustre Print (Any Frame) 345

16x20 Framed Lustre Print (Any Frame) 285

MEMORIAL DOCUMENTARY

Professionally produced and edited, this documentary will compile interviews of friends, family, and acquaintances to glean stories and anecdotes about the deceased along with pictures to enhance the storytelling. This is an excellent way to hear of stories that might never be told. 1200

PROGRAM TEMPLATE DESIGNS

Nelson Family Mortuary offers four basic service program templates that may then be customized. Below are examples of the different designs available.

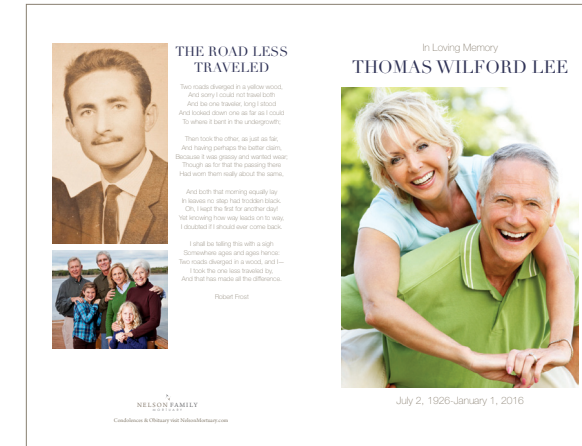
TEMPLATE 1



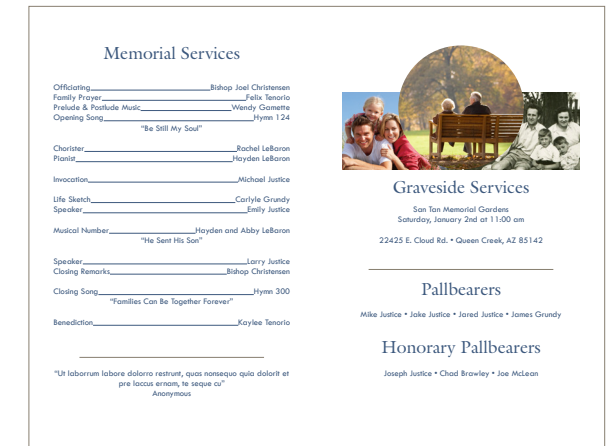
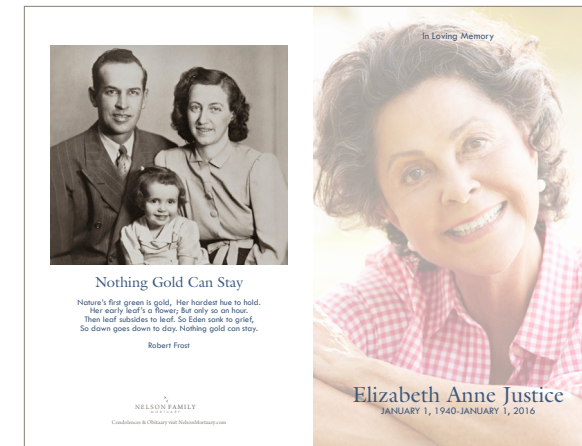
TEMPLATE 2



TEMPLATE 3



TEMPLATE 4



WRITING AN OBITUARY FOR YOUR LOVED ONE

Obituary's are among the most widely read and enduring stories in newspapers. Typically written by a loved one, an obituary can become an intimate view of what made that individual memorable to others.

DAILY HERALD, DESERET NEWS & SALT LAKE TRIBUNE OBITUARIES

All obituaries require pre-payment before running.

PRICING

DAILY HERALD

Set Up Fee (Including Online Guestbook)	40
Per Line Charge (18-22 Characters per Line)	3.16
Photo Fee	35
2nd Photo	10
2nd Run	30% Off
3rd Run	50% Off

DESERET NEWS/SALT LAKE TRIBUNE

Set Up Fee (Including Online Guestbook)	40
Per Line Charge (18-22 Characters per Line)	3.16
Photo Fee	35
2nd Photo	10
2nd Run	30% Off
3rd Run	50% Off

EXAMPLES



David Wayne Stokes
In Loving Memory

David Wayne Stokes, 57, passed away January 8, 2017. Funeral services will be held Saturday, January 14, 2017 at noon at the West Jordan Park Stake Center 7411 S. 4800 W., West Jordan. Friends may visit family on Friday from 6 to 8 p.m. at their ward at 4825 W. 7000 S., or Saturday from 11 to 11:45 a.m. prior to the funeral. For complete obituary and condolences go to legacyfunerals.com



Ron Newell Andersen
1941 – 2016

Ron Newell Andersen—a teacher to hundreds, a mentor to many, and a friend to all—died October 22, 2016, at his home in Provo, Utah, surrounded by his loving wife and five devoted children. He was 75.
Born March 23, 1941 in Tremonton, Utah to Robert James and Hilma Naomi Corbridge Andersen, Ron was a cowboy from the beginning to the end. He dearly loved his ranch outside Tremonton, and his weathered hands worked the land, built the home in which his children were happily raised, and jimmied a solution to every broken thing and misplaced part. He was happiest on horseback or behind the wheel of a truck or 4-wheeler, and the great outdoors was his heaven on earth.

Educated at Bear River High School, Utah State University, Weber State University, and Brigham Young University, he was wise beyond his education, and people of all ages and stations in life sought his advice and benefited from his counsel. He taught seminary for the LDS Church Education System for more than 35 years in Clearfield and Garland, Utah, and his students remember him as a warm, witty, loving instructor who worshiped God with both his words and his deeds and who believed in people more than they believed in themselves. An active Scouter, he was awarded the Silver Beaver for distinguished service and logged countless hours in tents and on hiking trails, trusting that struggling boys would grow into stalwart men when they had opportunities for hard work and service and when they knew they were unconditionally loved. A devout member of the Church of Jesus Christ of Latter-day Saints for all of his life, he served as a missionary in Norway and then shared his talents in church callings that shaped and defined him, including service in the Young Men's organization, the Sunday School, the stake presidency, and as stake patriarch.

He will be remembered for his teasing jokes, his wildly entertaining stories, his powerful testimony, his unflinching work ethic, his generous smile, and his willingness to come at any time of night to help any neighbor in need, and then to lie about having already been awake.

In his later years, when Parkinson's Disease robbed him of his strength and stamina, it also gave him a softness we treasured. During this time, he taught us patience and allowed us to show him a small measure of the service he had long showed all of us.

His memory will be cherished and kept alive by his adoring eternal wife and longtime caretaker, Ruth Eileen Owen Andersen; children RonNell Andersen Jones (KC), Erik Andersen, ShaLynn Nielson (Nik), Cortney Clemmer (Jeff), and Holly Andersen; his seven grandchildren, and his sister, Faye Hirschi.

The family wishes to thank Elevation Hospice for its thoughtful service and Nathan Zurcher for his tender care. Friends are invited to celebrate Ron's life in Provo at a viewing from 6-8 p.m. on Thursday, Oct. 27 at the Oak Hills Stake Center, 925 E. North Temple Drive, or on Friday, Oct. 28 at the Tremonton West Stake Center, 345 S. 1000 W. (Iowa String), where a viewing will be held from 9:30 to 10:30 a.m. and a funeral will follow at 11 a.m. Interment in the Logan City Cemetery. In lieu of flowers, please consider a tribute donation to the Michael J. Fox Foundation for Parkinson's Research. To express condolences visit www.NelsonMortuary.com



Lora Lynn Sorenson
age 47, died peacefully in the arms of her husband on January 4th 2017 at their home in Park City, UT after a courageous battle with cancer.

Lora was born on February 18th 1969 in Eugene, Oregon to Nancy Nelson and was adopted and raised by Dorothy and Yale Morgan in Orem, UT. She graduated from Mountain View High School. Lora had recently retired after a successful career as the vice president of a large highway supply company in Provo, UT. In 2005, Lora

was happily married to Bryce Sorenson who was her partner in life for almost 12 years at the time of her death.

Lora is survived by her husband, 3 children of her own, 2 children through marriage, 7 grandchildren and numerous others.

Besides spending time with her family and friends, Lora had a passion for traveling, exercising, solving puzzles, attending sporting events and caring for her dog Malco. Lora had a bright and energetic personality and was known for her ability to sense when people needed her help. She touched many lives with her generosity and passion for life.

Family and friends are invited to attend a Celebration of Life gathering on Saturday January 14th anytime from 3-6pm at the Nelson Family Mortuary located at 4780 N. University Ave., Provo, UT. In Lieu of flowers, the family requests that donations be made to Encircle: LGBTQ+ Family and Youth Resource Center. <https://encircletogether.org/donate/>. To express condolences visit www.NelsonMortuary.com

Evelyn Young Brereton age 93, passed away on November 7, 2016 in Provo. Funeral services will be held at 10:00 a.m. on Saturday, November 12, 2016 at Nelson Family Mortuary, 4780 N. University Avenue, Provo, UT. There will be a viewing on Friday, November 11, 2016 from 6:00 to 8:00 p.m. at the mortuary and from 9:00 to 9:45 a.m. prior to services on Saturday. Interment will be at the Orem City Cemetery. To express condolences visit www.NelsonMortuary.com

Left (Top):
Sample of obituary run in the Daily Herald.
Cost 527.41

Left (Below):
Example of a Death Notice in the Daily Herald (runs for two days and is free):

MOST OBITUARIES CONTAIN THE FOLLOWING INFORMATION

BIOGRAPHICAL FACTS AND PHOTOGRAPHS

Include your loved one's full name, birth date and place and most recent residence. Add a current or favorite photograph.

DATE AND LOCATION OF DEATH

You may choose to add the cause of death.

SURVIVORS

List your deceased loved one's spouse, children and their spouses, parents, siblings and other close relatives. Add predeceased loved ones in birth order after listing living family members.

BACKGROUND FACTS

Include accomplishments like education, employment, affiliations, hobbies, and charitable or military service.

FINAL SERVICES INFORMATION

Provide the date, time and location of funerals, memorials, viewings or wakes. Add the funeral provider's contact information.

SUGGESTED MEMORIAL CONTRIBUTIONS

Offering loved ones a way to take action can help them to heal. Request contributions to memorial accounts or charities. Add the address or website for donations to organizations that were important to your loved one.

OTHER HELPFUL SUGGESTIONS

START WITH A STATEMENT

Begin with a simple sentence such as: "Tom Smith of Provo, father of four and technology information specialist, died March 15th from cancer."

KEEP IT ACCURATE

Be sure all dates, names, contact information and arrangements are correct. Proofread to check spelling and grammar. Ask a friend to review your final submission.

TELL THE STORY OF A LIFE WELL LIVED

An obituary is a final opportunity to tell the story of your loved one. Focus on passions and achievements. Describe awards, career activities, hobbies, and volunteer activities.

CONSIDER MULTIPLE VERSIONS

Use one for the newspaper obituary, another as the basis for a life sketch/eulogy, and a longer version for the online memorial at NelsonMortuary.com.

Shown Above:
Sample Obituary from Deseret News. Cost 305.28

Shown Right:
Sample Obituary from Deseret News. Cost 713.88

SOLID HARDWOODS



ANGELUS PIETA 3495
Dark Matte Finish, Rosetan Crepe Interior, Solid Poplar Hardwood



BELLAMONT 3795
Natural Oak Finish, Almond Velvet Interior, Solid Oak Hardwood



BELLEVUE 3295
Dark High Gloss Finish, Rosetan Velvet Interior, Solid Poplar Hardwood



BUCKINGHAM 3295
Dark Matte Finish, Rosetan Crepe Interior, Solid Poplar Hardwood



CAROLINA CEDAR 3595
High Gloss Red Cedar Finish, Rosetan Velvet Interior, Solid Red Cedar



ESTATE 3295
High Gloss Finish, Rosetan Velvet Interior, Solid Poplar Hardwood



KINSLEY 3895
Medium Matte Finish, Rosetan Velvet Interior, Solid Oak Hardwood



LANCASTER 4995
High Gloss Finish, Rosetan Velvet Interior, Solid Mahogany Hardwood



LINCOLN 4695
High Gloss Cherry Finish, Rosetan Velvet Interior, Solid Cherry Hardwood



MADISON 3295
Satin Finish, Rosetan Velvet Interior, Solid Walnut Hardwood



MONTICELLO 4495
High Gloss Cherry Finish, Rosetan Velvet Interior, Solid Cherry Hardwood



MOTHER 3595
White with Pink Highlights, Pink Velvet Interior, Solid Poplar Hardwood



NORWICH PINE 2895
Natural Pine Finish, Rosetan Velvet Interior, Solid Pine Hardwood



PARLIAMENT 3895
Matte Finish, Rosetan Velvet Interior, Solid Poplar Hardwood



PRESIDENTIAL 4495
Matte Cherry Finish, Almond Velvet Interior, Solid Cherry Hardwood

CASKET PRICING



ROANOKE 2595
Natural Cedar Finish, Creme Velvet Interior, Solid Natural Cedar



ROCKY MOUNTAIN 2895
Natural Pine Finish, Almond Velvet Interior, Solid Pine Hardwood



RUSTIC OAK 3795
Dark Oak Finish, Rosetan Velvet Interior, Solid Oak Hardwood



TUSCANY 3295
Natural Poplar Finish, Rosetan Velvet Interior, Solid Poplar Hardwood



WASATCH 4495
High Gloss Cherry Finish, Rosetan Velvet Interior, Solid Walnut Hardwood



WOODLAND 3295
Dark High Gloss Finish, Rosetan Velvet Interior, Solid Poplar Hardwood

BRONZE AND COPPER



SUNSET 8995
Brushed Natural Antique Bronze Finish, Almond Velvet Interior, 32 oz. Copper



REGENT 7995
Brushed Natural with Black Finish, Arbutus Velvet Interior, 32 oz. Bronze

18 GAUGE STEEL 2395



ATHENA ROSE
Antique White Finish with Ice Rose Highlights, Pink Velvet Interior, 18 Gauge Steel



AUTUMN HAZE
Brushed Copper Gold with Autumn Haze Finish, Rosetan Crepe Interior, 18 Gauge Steel



BARCELONA
Black and Platinum Finish, Silver Crepe Interior, 18 Gauge Steel

18 GAUGE STEEL 2395



BELOVED
Sovereign Blue Finish, Fir Blue Highlights, Blue Velvet Interior, 18 Gauge Steel



BREITLING
Antique White Finish, Platinum Highlights, Pearl Velvet Interior, 18 Gauge Steel



BRIAR ROSE
Brushed Lilac with Lilac Finish, Pink Crepe Interior, 18 Gauge Steel



CORONADO
Autumn Haze Finish, Antique Bronze Highlights, Almond Velvet Interior, 18 Gauge Steel



COVINGTON
Mid Bronze Finish, Black Highlights, Arbutus Velvet Interior, 18 Gauge Steel



ELEGANCE
Antique White Finish with Ice Rose Highlights, Pink Crepe Interior, 18 Gauge Steel



FIELDSTONE
Brushed Pale Gold with Mid Bronze Finish, Rosetan Crepe Interior, 18 Gauge Steel



HUNTER
Hunter Green Finish, Almond Velvet Interior, 18 Gauge Steel



KALANI
Bright White Finish, White Velvet Interior, 18 Gauge Steel



MAXIMUS
Brushed Ebony Finish, Pearl Velvet Interior, 18 Gauge Steel



MISTY ROSE
Ice Rose Finish, Platinum Highlights, Pink Velvet Interior, 18 Gauge Steel



MOCHA
Argive Gold and Heritage Bronze, Tiffany Gold Finish, Rosetan Crepe Interior, 18 Gauge Steel



PEARL ROSE
Ice Rose Finish with Platinum Highlights, Pink Velvet Interior, 18 Gauge Steel



PRAYING HANDS
Autumn Haze Finish, Antique Bronze Highlights, Rosetan Crepe Interior, 18 Gauge Steel



RELIGIOUS MOCHA
Pearl Fawn Venetian Bronze Finish, Rosetan Crepe Interior, 18 Gauge Steel

18 GAUGE STEEL PREMIUM 2595



SILVER PLUM

Brushed Natural Ice Plum Finish, Pink Velvet Interior, 18 Gauge Steel



SILVERTON

Ice Pearl Finish, Pearl Velvet Interior, 18 Gauge Steel



SKY BLUE

Sovereign Blue Finish, Blue Crepe Interior, 18 Gauge Steel



SPRUCE

Fir Blue Finish, Platinum Highlights, Blue Crepe Interior, 18 Gauge Steel



STERLING

Ice Pearl Finish, Pearl Velvet Interior, 18 Gauge Steel



WINDSOR

Argive Gold Finish, Rosetan Crepe Interior, 18 Gauge Steel

STAINLESS STEEL 2995



LIBERTY

Brushed Natural Dark Midnight Blue, Pearl Velvet Interior, Stainless Steel



NOBLE

Brushed Monarch Blue Finish, Blue Velvet Interior, Stainless Steel



REGAL

Brushed Natural Platinum Finish, Pearl Velvet Interior, Stainless Steel



VICTORIA II

Brushed Natural Silver Rose Finish, Silver Highlight, Pink Velvet Interior, Stainless Steel



ALEXANDER

Brushed Gray with Dark Gray Finish, Pearl Velvet Interior, 18 Gauge Steel



ANTIQUE BRONZE

Brushed Topaz with Antique Bronze Finish, Rosetan Velvet Interior, 18 Gauge Steel



BRIGHTON

Brushed Light Gold, Rosetan Velvet Interior, 18 Gauge Steel



CASPIAN

Dark Midnight Blue Finish with Gold Highlights, Pearl Velvet Interior, 18 Gauge Steel



DEVEREAUX

Brushed Topaz Antique Bronze Finish, Almond Velvet Interior, 18 Gauge Steel



LACY

Brushed Ice Rose with Ice Rose Finish, Antique Bronze Highlights, Pink Velvet Interior, 18 Gauge Steel



LEGACY

Full Brush Copper & Bronze Finish, Rosetan Velvet Interior, 18 Gauge Steel



LILAC SILVER

Lilac Silver Brush Finish, Pink Velvet Interior, 18 Gauge Steel



NOBLE BLUE BRUSH

Natural Brush with Blue Spruce Finish, Blue Velvet Interior, 18 Gauge Steel



ONYX EBONY

Onyx Ebony Natural Brush, Pearl Velvet Interior, 18 Gauge Steel



PRINCETON

Mid Bronze with Black Highlights, Beige Velvet Interior, 18 Gauge Steel



ROYAL EBONY

Natural Ebony Brush Finish, White Velvet Interior, 18 Gauge Steel



SKYLINE

Brushed Gold with Black Highlights, Rosetan Velvet Interior, 18 Gauge Steel



SPARTAN

Hunter Green Finish, Gold Highlights, Pearl Velvet Interior, 18 Gauge Steel



WHITE CROSS

White Shade with Gold Finish, Pearl Crepe Interior, 18 Gauge Steel

20 GAUGE STEEL 1795



EMPIRE BLUE

Light Blue Finish, Blue Crepe Interior,
20 Gauge Steel



ESSEX

Platinum Finish, Silver Crepe Interior,
20 Gauge Steel



HERITAGE WHITE/PINK

Heritage White Finish, Pink Crepe
Interior, 20 Gauge Steel



HERITAGE WHITE

Heritage White Finish, White Crepe
Interior, 20 Gauge Steel



LADY GUADALUPE

White Finish with Gold Highlights,
Pearl Crepe Interior, 20 Gauge Steel



MANDARIN

Mandarin Finish, Rosetan Crepe
Interior, 20 Gauge Steel



ORCHID

Orchid Finish with Platinum Highlights,
Pink Crepe Interior, 20 Gauge Steel



PRINCESS

Pink Finish with Platinum Highlights,
Pink Crepe Interior, 20 Gauge Steel



SANDSTONE

Champagne Finish, Rosetan Crepe
Interior, 20 Gauge Steel



TITAN

Ebony Finish with Platinum Highlights,
Silver Crepe Interior, 20 Gauge Steel

20 GAUGE STEEL (WITHOUT GASKET) 1495

EMPIRE BLUE, ESSEX, HERITAGE WHITE/PINK, HERITAGE WHITE/WHITE, LADY GUADALUPE,
MANDARIN, ORCHID, PRINCESS, SANDSTONE, AND TITAN

OVERSIZE CASKETS 2995

18 GAUGE STEEL

SIZE 28 - 2995 & SIZE 31 - 3295

28: Interior Width 27.5" (Standard Vault Size), Interior Length 79.5"
31: Interior Width 30.5" (Oversize Vault), Interior Length 84.5"



ANTIQUÉ WHITE

Antique White Finish with Pink Rose
Highlights, Pink Crepe Interior,
18 Gauge Steel



PLATINUM

Ebony Highlights, Silver Crepe Interior,
18 Gauge Steel



SANDSTONE

Champagne Finish, Rosetan Crepe
Interior, 20 Gauge Steel



SAPPHIRE

Sovereign Blue Finish with Black
Highlights, Blue Crepe Interior,
18 Gauge Steel

OVERSIZE CASKETS

SOLID HARDWOOD



CAROLINA CEDAR

SIZE 28 - 4195
Rosetan Velvet Interior, Solid Cedar
Hardwood



ESTATE 3295

SIZE 28 - 3995 & SIZE 31 - 4195
High Gloss Finish, Rosetan Velvet
Interior, Solid Poplar Hardwood



ROANOKE

SIZE 28 - 4195
Matte Finish, Rosetan Velvet Interior,
Solid Cedar Hardwood